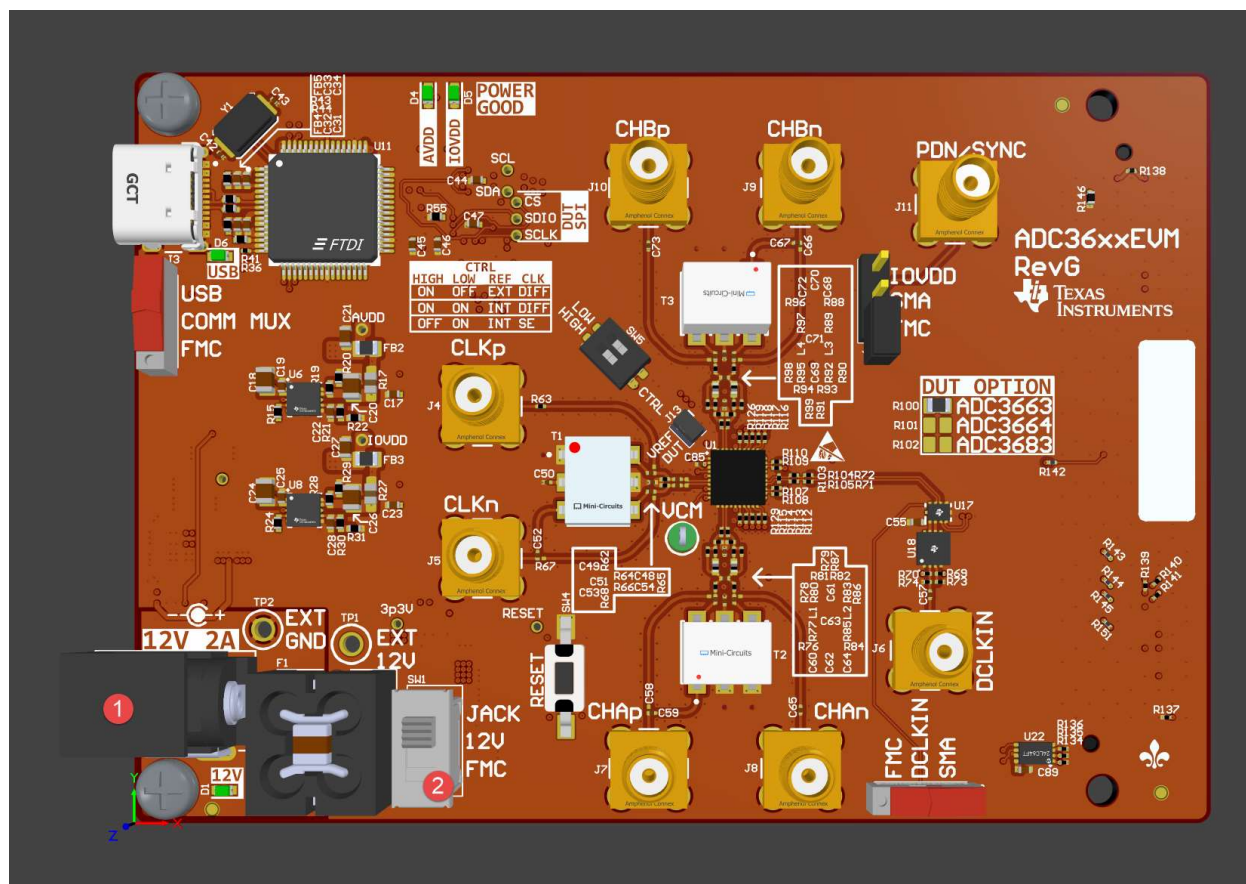


Power Validation

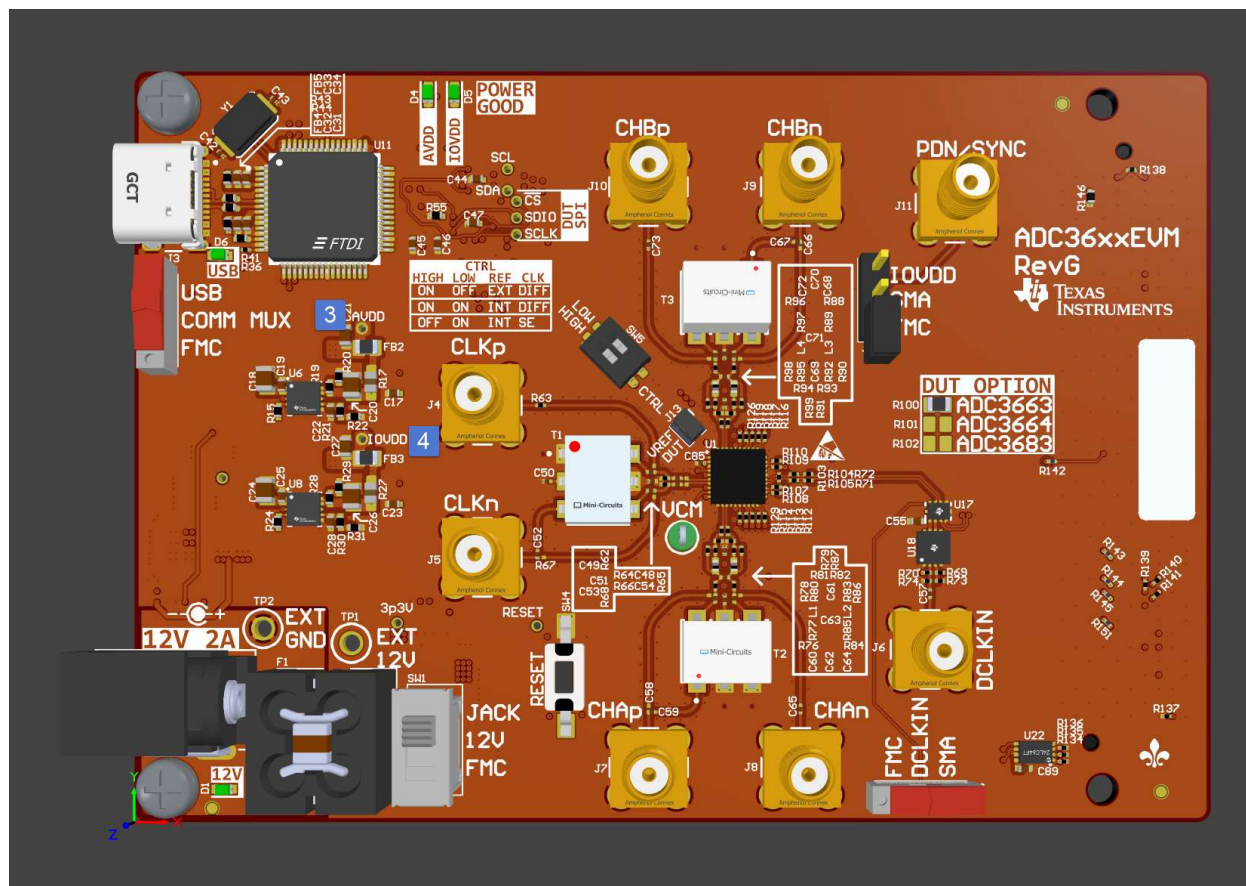
Step 1:

Using a bench top power supply, set the compliance to 12V and 1A accordingly. Plug the jack into the RAP722 plug on the board (item #1) and slide the switch to “JACK” (item #2).



Step 2:

Using a DMM, verify that the voltages at test points AVDD and IOVDD both read within 1.75 and 1.85V. They are located on the board at the following blue markers 3 & 4



Step 3:

Ship the boards to the HSC group at TI to verify the rest of the functional performance of the device